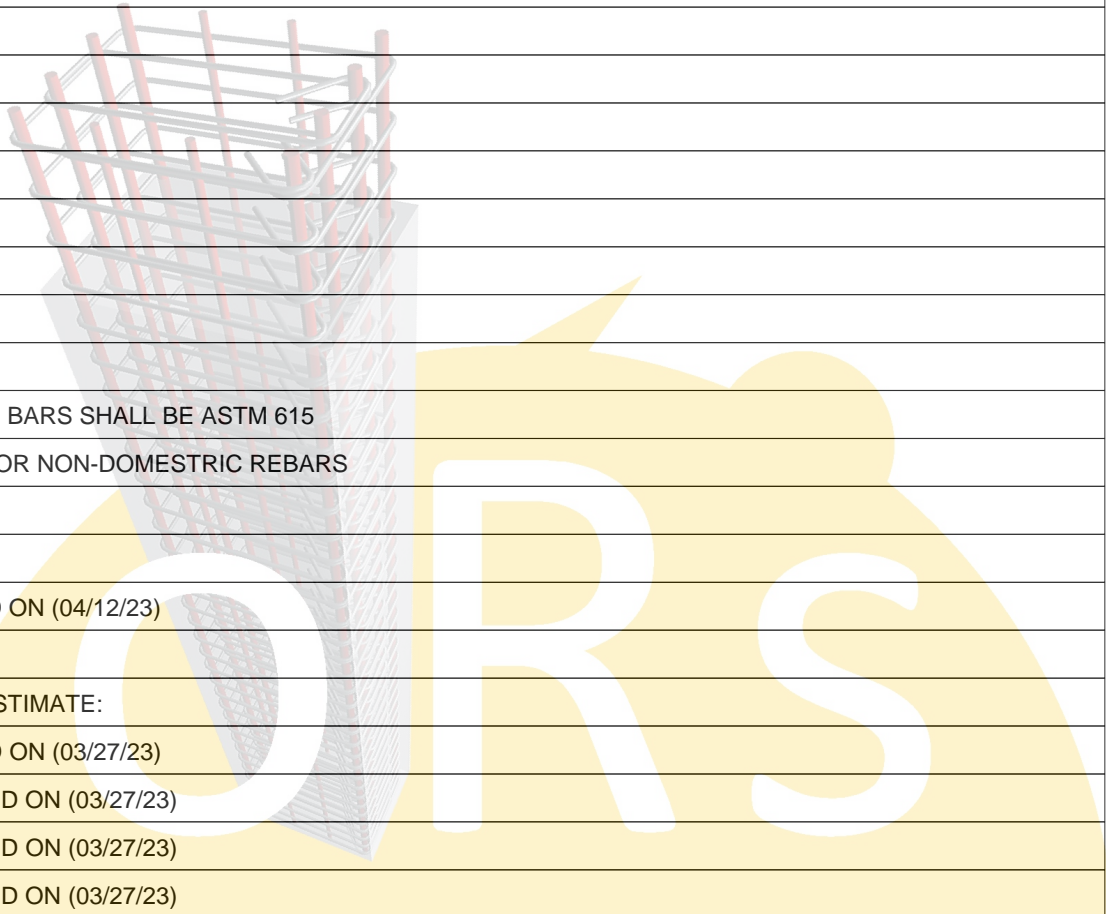


Bid Date -

**\*\* ESTIMATING BAR LIST \*\***

LINE	LA	EP	A/D	STRUCTURE	MULT	REQ	CODE	+	X	QTY	SZ/GR	LENGTH	B	COMMENT	LINE LB
1				CONCRETE											
2															
3				SUMMIT ROCK CLUBHOUSE											
4				-											
5															
6				ARCHITECT: -											
7				PHONE :-											
8				FAX :-											
9															
10				STRUCTURE: -											
11				PHONE :-											
12				FAX :-											
13															
14				REBAR:											
15				1.ALL REINFORCEMENT BARS SHALL BE ASTM 615											
16				GRADE 60 DOMESTIC OR NON-DOMESTRIC REBARS											
17															
18				ADDENDUMS:											
19				1.ADDENDUM #1 DATED ON (04/12/23)											
20															
21				DRAWING USED FOR ESTIMATE:											
22				1.A0.00 TO A9.21 DATED ON (03/27/23)											
23				2.C0.01 TO C09.00 DATED ON (03/27/23)											
24				3.E0.01 TO EP2.03 DATED ON (03/27/23)											
25				4.ID0.01 TO ID8.03 DATED ON (03/27/23)											
26				5.L0.01 TO L5.10 DATED ON (03/27/23)											
27				6.M0.01 TO MEP1.01 DATED ON (03/27/23)											
28				7.P0.01 TO P6.02 DATED ON (03/27/23)											
29				8.QF1 TO QF39 DATED ON (03/27/23)											
30				9.S1.01 TO S6.13 DATED ON (03/27/23)											
31															





Bid Date -

**\*\* ESTIMATING BAR LIST \*\***

LINE	LA	EP	A/D	STRUCTURE	MULT	REQ	CODE	+	X	QTY	SZ/GR	LENGTH	B	COMMENT	LINE LB
63				AND REINF. USED AS PER SECTION(1/L5.09)											
64				4.WE ASSUMED ALL CONCRETE WALL HEIGHT AS MAXIMUM.											
65				5.WE ASSUMED CONCRETE CURB LENTH AS.(4295 LFT)											
66															
67				ACCESSORIES:											
68				BUILDING:											
69				1.SPREAD FOOTING (53-LOC.)											
70				3" BRICKS = 53 NO'S											
71				2.GRADE BEAM (45 LFT)											
72				3" BRICKS = 25 NO'S											
73				3.WALL FOOTING (1021)											
74				3" BRICKS = 520 NO'S											
75				3.SLAB ON GRADE (5" THICK = 13345 SQ.FT))											
76				2" BRICKS = 840 NO'S											
77															
78				SITWORK:											
79				1.SIDEWALK (4" THICK = 19060 SQ.FT))											
80				2" BRICKS = 1200 NO'S											
81				2.CONCRETE PAVEMENT (5" THICK = 10445 SQ.FT))											
82				2½" BRICKS = 660 NO'S											
83				3.LIGHT POLE (27-LOC)											
84				3" PIER BOOT = 81 NO'S											
85				3" GAUGE WHEELS = 162 NO'S											
86															
87				NOTES:											
88				1.REBAR ACCESSORIES: AS PER STANDARD PRACTICE											
89															
90				SPREAD FTG.										SPREAD FOOTING	
91				REF.(S2.01)											
92				MARK=F2 (19-LOC.)											
93						19			2	3	#6	3-00		3-#6 EW BOT	514

Bid Date -

\*\* ESTIMATING BAR LIST \*\*

LINE	LA	EP	A/D	STRUCTURE	MULT	REQ	CODE	+	X	QTY	SZ/GR	LENGTH	B	COMMENT	LINE LB
94 MARK=F2 (19-LOC.)															
95						19			2	4	#7	3-06		4-#7 EW BOT	1087
96 MARK=F3 (15-LOC.)															
97						15			2	4	#7	3-06		4-#7 EW BOT	858
98															
99 GRADE BEAM GRADE BEAM															
100 EXTERIOR BEAM															
101 REF.(S2.01 & 2/S3.11) (45 LFT)															
102						2			2	2	#6	40-00		2-#6 T&B	481
103									2	70	#3	3-10	L	#3 @9" HAIRPIN ES	202
104										40	#4	4-03	L	#4 @15" BENT	114
105															
106 WALL FOOTING WALL FOOTING															
107 REF.(S2.01 & 9/S3.11) (102 LFT)															
108									3	4	#4	40-00		4-#4 CONT	321
109									4	4	#4	4-10	L	4-#4 COR	52
110									3	1	#4	40-00		1-#4 CONT	80
111									4	1	#4	4-10	L	1-#4 COR	13
112										140	#5	2-00		#5 @9" TRANS	292
113 REF.(S2.01 & 8/S3.11) (68 LFT)															
114									2	4	#4	40-00		4-#4 CONT	214
115									2	4	#4	4-10	L	4-#4 COR	26
116										95	#5	2-00		#5 @9" TRANS	198
117										60	#4	4-03	L	#4 @15" BENT	170
118										60	#4	4-03	L	#4 @15" DWL	170
119 REF.(S2.01 & 12/S3.11) (35 LFT)															
120										3	#4	40-00		3-#4 CONT	80
121										2	#3	40-00		2-#3 CONT	30
122										50	#5	1-09		#5 @9" TRANS	91
123										70	#3	4-03	L	#3 @15" HAIRPIN	112
124 REF.(S2.01 & 6/S3.11) (186 LFT)															

Bid Date -

## \*\* ESTIMATING BAR LIST \*\*

LINE	LA	EP	A/D	STRUCTURE	MULT	REQ	CODE	+	X	QTY	SZ/GR	LENGTH	B	COMMENT	LINE LB
125						5			2	4	#4	40-00		4-#5 CONT T&B	1069
126						5			2	4	#5	6-00	H	4-#5 COR T&B	250
127									2	190	#4	3-09		#4 @12" TRANS T&B	952
128										50	#4	6-02	L	#4 @48" STANDEE	206
129										190	#5	5-02	H	#5 @12" DWL OF	1024
130										190	#4	4-04	L	#4 @12" DWL IF	550
131										15	#3	3-02		#3 @12" DWL	18
132	REF.(S2.01 & 6/S3.11) (108 LFT)														
133						3			2	4	#5	40-00		4-#5 CONT T&B	1001
134						2			2	4	#5	6-00	H	4-#5 COR T&B	100
135									2	112	#4	3-09		#4 @12" TRANS T&B	561
136										32	#4	6-02	L	#4 @48" STANDEE	132
137										90	#5	5-02	H	#5 @12" DWL OF	485
138										90	#4	4-04	L	#4 @12" DWL IF	261
139	REF.(S2.01 & 3/S3.11) (256 LFT)														
140						7			2	8	#5	40-00		8-#5 CONT T&B	4673
141						3			2	8	#5	6-00	H	8-#5 COR T&B	300
142									2	260	#6	8-06		#6 @9" TRANS T&B	6639
143										130	#4	7-02	L	#4 @48" STANDEE	622
144										265	#8	9-02	H	#8 @9" DWL OF	6486
145										210	#4	4-00	L	#4 @15" BENT	561
146	REF.(S2.01 & 4/S3.11) (6 LFT)														
147									2	6	#4	10-00		6-#4 CONT T&B	80
148									2	10	#6	6-00		#6 @12" TRANS T&B	180
149										4	#4	6-02	L	#4 @48" STANDEE	16
150										10	#6	5-10	H	#6 @12" DWL OF	88
151										10	#4	4-04	L	#4 @12" DWL IF	29
152	REF.(S2.01 & 1A/S3.12) (260 LFT)														
153						7			2	3	#4	10-00		3-#4 CONT T&B	281
154									2	350	#5	2-00		#5 @9" TRANS T&B	1460
155										70	#4	6-02	L	#4 @48" STANDEE	288

Bid Date -

\*\* ESTIMATING BAR LIST \*\*

LINE	LA	EP	A/D	STRUCTURE	MULT	REQ	CODE	+	X	QTY	SZ/GR	LENGTH	B	COMMENT	LINE LB
156										265	#3	6-02	L	#3 @12" HAIR PIN	614
157															
158				CONCRETE WALL							CONCRETE WALL				
159 REF.(S2.01 & 6/S3.11) (184 LFT)															
160										190	#5	10-03		#5 @12" VERT OF	2031
161										190	#4	10-03		#4 @12" VERT IF	1301
162						5			2	12	#4	40-00		#4 @12" HOR EF	3206
163						5			2	12	#4	4-10	L	#4 @12" COR EF	387
164										15	#3	10-03		#3 @12" VERT	58
165										12	#3	20-00		#3 @12" HOR	90
166										190	#5	6-00	H	#5 @12" TOP DWL	1189
167 REF.(S2.01 & 6/S3.11) (85 LFT)															
168										90	#5	10-03		#5 @12" VERT OF	962
169										90	#4	10-03		#4 @12" VERT IF	616
170						3			2	12	#4	40-00		#4 @12" HOR EF	1924
171										90	#5	6-00	H	#5 @12" TOP DWL	563
172 REF.(S2.01 & 3/S3.11) (262 LFT)															
173										265	#8	15-00		#8 @9" VERT OF	10613
174										265	#6	15-00		#6 @9" VERT IF	5970
175						7			2	16	#4	40-00		#4 @12" HOR EF	5985
176						3			2	16	#4	4-10	L	#4 @12" COR EF	310
177										3	#3	40-00		3-#3 CONT TOP	45
178										35	#4	2-04	L	#4 @12" DWL TOP	55
179									2	3	#4	7-04		#4 @12" TIES	29
180 REF.(S2.01 & 4/S3.11) (6 LFT)															
181										10	#6	15-00		#6 @12" VERT OF	225
182										10	#4	15-00		#4 @12" VERT IF	100
183									2	16	#4	10-00		#4 @12" HOR EF	214
184															
185				ELEVATOR PIT							ELEVATOR PIT				
186 REF.(5/S3.11) (260 SQ.FT) (70 LFT)															

Bid Date -

\*\* ESTIMATING BAR LIST \*\*

LINE	LA	EP	A/D	STRUCTURE	MULT	REQ	CODE	+	X	QTY	SZ/GR	LENGTH	B	COMMENT	LINE LB
187									2	25	#4	40-00		#4 @12" EW T&B	1336
188										20	#4	5-08	L	#4 @48" STANDEE	76
189										75	#4	6-08	L	#4 @12" D/V	334
190									2	7	#4	40-00		#4 @12" HOR EF	374
191									8	7	#4	4-10	L	#4 @12" COR EF	181
192										75	#4	3-06	L	#4 @12" TOP BENT	175
193									2	1	#4	40-00		1-#4 CONT	53
194										40	#5	5-06		#5 @24" CMU DWL	229
195															
196	SOG			SLAB ON GRADE											
197	REF.(S2.01) (13345 SQ.FT)														
198	5" THICK SLAB														
199										545	#4	40-00		#4 @16" EW	14562
200															
201	UPPER LEVEL			UPPER LEVEL											
202	REF.(S2.02)														
203	5" THICK SLAB DECK														
204	MESH TYPE = 6x6-W2.1xW2.1 WWF														
205	SHEET SIZE = 20'-0"x8'-0"														
206	AREA = 3495 SQ.FT														
207	NO OF SHEET = 26 NO'S														
208															
209	TYPICAL CURB														
210	REF.(S2.02 & 7/S6.12) (205 LFT)														
211									7	1	#4	40-00		1-#4 CONT	187
212									4	1	#4	4-10	L	1-#4 COR	13
213									7	2	#4	40-00		2-#4 CONT	374
214									4	2	#4	4-10	L	2-#4 COR	26
215										210	#4	2-00	L	#4 @12" DWL	281
216															
217	SITWORK			SITWORK											

Bid Date -

## \*\* ESTIMATING BAR LIST \*\*

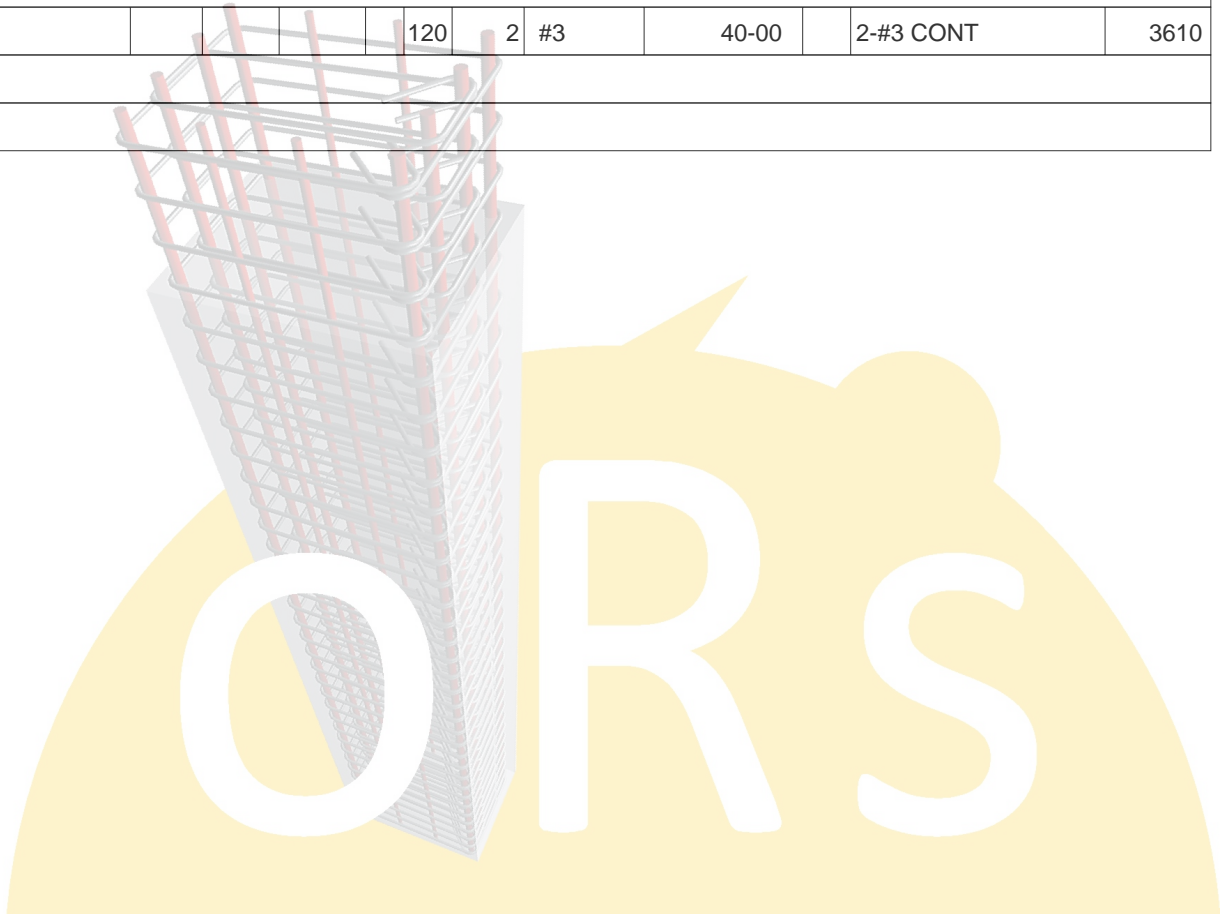
LINE	LA	EP	A/D	STRUCTURE	MULT	REQ	CODE	+	X	QTY	SZ/GR	LENGTH	B	COMMENT	LINE LB
218				CONCRETE SIDEWALK											
219				REF.(C2.0 & C8.00) (19060 SQ.FT)											
220				4" THICK SLAB CONC.											
221										510	#3	40-00		#3 @24" EW	7670
222															
223				CONCRETE PAVEMENT											
224				REF.(C2.0) (10445 SQ.FT)											
225				5" THICK CONCRETE											
226										375	#3	40-00		#3 @18" EW	5640
227															
228				DUMPSTER PAD											
229				REF.(C2.00 & 2/L5.07) (64 LFT) (295 SQ.FT)											
230						2			2	4	#4	40-00		4-#4 CONT T&B	428
231						2			2	4	#4	4-10	L	4-#4 COR T&B	52
232									2	36	#4	4-06		#4 @24" TRANS T&B	216
233									2	70	#4	6-04	L	#4 @12" D/V EF	592
234						2			2	4	#4	40-00		#4 @12" HOR EF	428
235						2			2	4	#4	4-10	L	#4 @12" COR EF	52
236										36	#5	5-06		#5 @24" CMU DWL	207
237				SLAB ON GRADE											
238				8" THICK CONCRETE											
239										15	#3	40-00		#3 @18" EW	226
240															
241				LIGHT POLE											
242				REF.(L1.03 & 1/L5.09) (27- LOC.)											
243									27	8	#5	6-00		8-#5 VERT	1352
244									27	8	#3	5-08		#3 @12" TIES	460
245															
246				CONCRETE STAIR											
247				REF.(S2.02 & 8/S6.02) (125 SQ.FT) (95 LFT)											
248						2			2	2	#5	40-00		2-#5 CONT T&B	334



Bid Date -

**\*\* ESTIMATING BAR LIST \*\***

LINE	LA	EP	A/D	STRUCTURE	MULT	REQ	CODE	+	X	QTY	SZ/GR	LENGTH	B	COMMENT	LINE LB
249										40	#3	6-00	L	#3 @10" STIRR	90
250									3	1	#3	40-00		1-#3 NOSING	45
251										10	#4	40-00		#4 @12" EW	267
252															
253	CONCRETE CURB														
254	REF.(A,B/C2.0) (4295 LFT)														
255									120	2	#3	40-00		2-#3 CONT	3610
256															
257															



Bid Date -

**\*\* TOTALS PAGE (LBS) \*\***

SPREAD FTG.	STRUCTURE TOTAL		STRAIGHT		LIGHT BENT		HEAVY BENT		STOCK/MILL	
SIZE	%	Weight	%	Weight	%	Weight	%	Weight	%	Weight
#6 Gr 60	100	514	100	514						
#7 Gr 60	100	1,945	100	1,945						
Average Lbs per Linear Feet = 1.9006					Average Rebar Size = 6.79					
Total 1.3 Tons	100	2,459	100	2,459						

GRADE BEAM	STRUCTURE TOTAL		STRAIGHT		LIGHT BENT		HEAVY BENT		STOCK/MILL	
SIZE	%	Weight	%	Weight	%	Weight	%	Weight	%	Weight
#3 Gr 60	100	202			100	202				
#4 Gr 60	100	114			100	114				
#6 Gr 60	100	481	100	481						
Average Lbs per Linear Feet = .7752					Average Rebar Size = 4.95					
Total .4 Tons	100	797	60	481	40	316				

WALL FOOTING	STRUCTURE TOTAL		STRAIGHT		LIGHT BENT		HEAVY BENT		STOCK/MILL	
SIZE	%	Weight	%	Weight	%	Weight	%	Weight	%	Weight
#3 Gr 60	100	774	2	18	94	726			4	30
#4 Gr 60	100	6,734	28	1,874	46	3,096			26	1,764
#5 Gr 60	100	9,874	78	7,715			22	2,159		
#6 Gr 60	100	6,907	99	6,819			1	88		
#8 Gr 60	100	6,486					100	6,486		
Average Lbs per Linear Feet = 1.0748					Average Rebar Size = 5.59					
Total 15.4 Tons	100	30,775	53	16,426	12	3,822	28	8,733	6	1,794

Bid Date -

**\*\* TOTALS PAGE (LBS) \*\***

CONCRETE WALL		STRUCTURE TOTAL		STRAIGHT		LIGHT BENT		HEAVY BENT		STOCK/MILL	
SIZE	%	Weight	%	Weight	%	Weight	%	Weight	%	Weight	
#3 Gr 60	100	193	30	58					70	135	
#4 Gr 60	100	14,127	16	2,260	5	752			79	11,115	
#5 Gr 60	100	4,745	63	2,993			37	1,752			
#6 Gr 60	100	6,195	100	6,195							
#8 Gr 60	100	10,613	100	10,613							
		Average Lbs per Linear Feet = 1.0455				Average Rebar Size = 5.66					
Total 18.0 Tons	100	35,873	62	22,119	2	752	5	1,752	31	11,250	

ELEVATOR PIT		STRUCTURE TOTAL		STRAIGHT		LIGHT BENT		HEAVY BENT		STOCK/MILL	
SIZE	%	Weight	%	Weight	%	Weight	%	Weight	%	Weight	
#4 Gr 60	100	2,529			30	766			70	1,763	
#5 Gr 60	100	229	100	229							
		Average Lbs per Linear Feet = .6886				Average Rebar Size = 4.08					
Total 1.4 Tons	100	2,758	8	229	28	766			64	1,763	

SOG		STRUCTURE TOTAL		STRAIGHT		LIGHT BENT		HEAVY BENT		STOCK/MILL	
SIZE	%	Weight	%	Weight	%	Weight	%	Weight	%	Weight	
#4 Gr 60	100	14,562							100	14,562	
		Average Lbs per Linear Feet = .6680				Average Rebar Size = 4.00					
Total 7.3 Tons	100	14,562							100	14,562	

Bid Date -

\*\* TOTALS PAGE (LBS) \*\*

UPPER LEVEL	STRUCTURE TOTAL		STRAIGHT		LIGHT BENT		HEAVY BENT		STOCK/MILL	
SIZE	%	Weight	%	Weight	%	Weight	%	Weight	%	Weight
#4 Gr 60	100	881			36	320			64	561
Average Lbs per Linear Feet = .6680					Average Rebar Size = 4.00					
Total .5 Tons	100	881			36	320			64	561

SITWORK	STRUCTURE TOTAL		STRAIGHT		LIGHT BENT		HEAVY BENT		STOCK/MILL	
SIZE	%	Weight	%	Weight	%	Weight	%	Weight	%	Weight
#3 Gr 60	100	17,741	3	460	1	90			97	17,191
#4 Gr 60	100	2,035	11	216	34	696			55	1,123
#5 Gr 60	100	1,893	100	1,893						
Average Lbs per Linear Feet = .4164					Average Rebar Size = 3.27					
Total 10.9 Tons	100	21,669	12	2,569	4	786			85	18,314

GRAND TOTALS	TOTAL		STRAIGHT		LIGHT BENT		HEAVY BENT		STOCK/MILL	
SIZE	%	Weight	%	Weight	%	Weight	%	Weight	%	Weight
#3 Gr 60	100	18,910	3	536	5	1,018			92	17,356
#4 Gr 60	100	40,982	11	4,350	14	5,744			75	30,888
#5 Gr 60	100	16,741	77	12,830			23	3,911		
#6 Gr 60	100	14,097	99	14,009			1	88		
#7 Gr 60	100	1,945	100	1,945						
#8 Gr 60	100	17,099	62	10,613			38	6,486		
Average Lbs per Linear Feet = .7600					Average Rebar Size = 4.91					
Total 54.9 Tons	100	109,774	40	44,283	6	6,762	10	10,485	44	48,244